



VRLA Rechargeable Battery

BP160-12



FEATURES

- Maintenance free(no water topping-up required).
- No free acid(Non-spillable battery).
- Low self-discharge rate, lower than 3% capacity loss per month.
- Can be used in any orientation(excluding used inverted).
- Flame-arrestor is installed to ensure safety.
- Carry handles for easy installation.
- Absorbent Glass Mat technology for efficient gas recombination.

APPLICATION

- UPS
- Telecom



SPECIFICATIONS

Nominal Voltage	12 V
Nominal Capacity	160Ah @ 20 hour rate F.V.(1.75V/cell)
Approx. Weight	51.2Kg(112.9lbs.)
Terminals	B9 (Fitting M8 bolt & nut) I3 is optional
Internal Resistance	≤2.7mΩ (Fully Charged)
Max. Discharge Current	800 A (5 sec.)
Max. Charge Current	48 A
Operating Temperature Range	Charge : 0°C~40°C(32°F~104°F) Discharge : -20°C~50°C(-4°F~122°F) Storage : -20°C~40°C(-4°F~104°F)
Container Material	Standard: ABS(UL 94-HB) BP160-12 Optional: Flame Retardant ABS(UL 94-V0) BP160-12FR



- IEC 60896-21/22
- JIS C 8704-2
- GB/T 19638.2

DIMENSION(mm/inch)

OUTER DIMENSIONS

TERMINAL TYPE

Length

483±2.0 (19.02±0.08)

Width

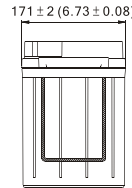
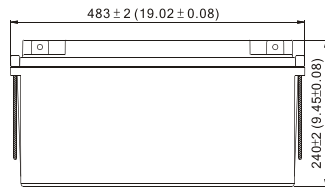
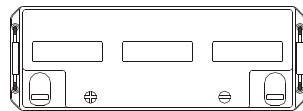
171±2.0 (6.73±0.08)

Container Height

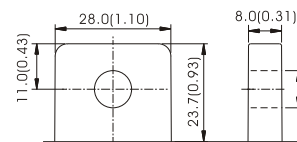
240±2.0 (9.45±0.08)

Total Height

240±2.0 (9.45±0.08)

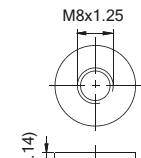


Terminal B9



[M8 BOLT & NUT]

Terminal I3



[M8 BOLT]

Terminal Hardware Initial Torque: B9,I3(10.0Nm±5%)

Constant power discharge characteristics at 25 °C/77 °F

Unit: W

F.V. (V/cell) \ Discharge Time	15 Min	30 Min	1 Hr	3 Hr	5 Hr	10 Hr	20 Hr
1.80V	2933	2030	1165	466.3	321.6	180.0	94.8
1.75V	3068	2107	1199	475.7	326.4	182.4	96.0
1.70V	3163	2155	1221	480.0	328.2	183.3	96.5
1.65V	3235	2185	1236	483.4	329.4	183.8	96.7
1.60V	3300	2208	1248	486.2	330.3	183.8	96.7

Constant current discharge characteristics at 25 °C/77 °F

Unit: A

F.V. (V/cell) \ Discharge Time	15 Min	30 Min	1 Hr	3 Hr	5 Hr	10 Hr	20 Hr
1.80V	255.0	172.0	97.9	38.86	26.80	15.00	7.90
1.75V	266.8	178.6	100.8	39.64	27.20	15.20	8.00
1.70V	275.0	182.7	102.6	40.00	27.35	15.28	8.04
1.65V	281.3	185.2	103.8	40.28	27.45	15.32	8.06
1.60V	287.0	187.1	104.9	40.52	27.52	15.32	8.06

All data and artworks shall be changed without prior notice, BB reserves the right to explain and update the information contained hereinto.