

# ZELUS

## GEL Technology Battery

### GBC Deep Cycling

# GBC 12/37.5

## 12V, 37.5Ah/C5

### FEATURES

- GBC was designed with solid lead plated and gelled electrolyte technology.
- A deep-cycle lead-acid battery is designed to deliver a maximum capacity and cycles as discharging.
- High temperature stability, mechanical strength and low acid displacement.
- Superior performance with deep discharges.
- Patented safety valve to have accurate pressure operating for long battery life.

### APPLICATIONS

- Golf Cars
- Power Wheelchairs
- Floor Sweepers
- Recreational Vehicle (RV)
- Renewable Energy



### SPECIFICATIONS

|                             |  |
|-----------------------------|--|
| Nominal Voltage             | 12 V   |
| Nominal Capacity            | 37.5 Ah @ 5 hour rate F.V.(1.70V/cell)   |
| Approx. Weight              | 16.1Kg(52.91lbs.)  |
| Terminals                   | I2   |
| Internal Resistance         | ≤8mΩ (Fully Charged )  |
| Max. Discharge Current      | 640 A (5 sec.)   |
| Max. Charge Current         | 7.5 A  |
| Self Discharge              | < 2% per month (25°C)  |
| Operating Temperature Range | -20°C~55°C(-4°F~131°F)   |
| Container Material          | Standard: ABS( UL94 HB) GBC 12/37.5<br>Optional: Flame Retardant ABS(UL94 V-0) GBC 12/37.5FR |

MH19884

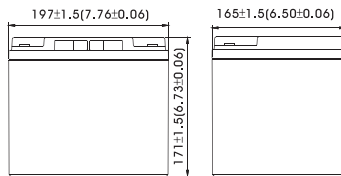
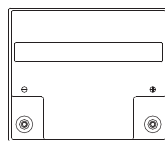
- IEC 61056-1
- JIS C 8702-1
- GB/T 19639.1

### DIMENSION(mm/inch)

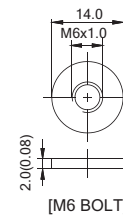
### OUTER DIMENSIONS

### TERMINAL TYPE

- Length  
197±1.5 (7.76±0.06)
- Width  
165±1.5 (6.50±0.06)
- Container Height  
171±1.5 (6.73±0.06)
- Total Height  
171±1.5 (6.73±0.06)



- Terminal I2



Terminal Hardware Initial Torque: I2(5.5Nm±5%)

### Constant power discharge characteristics at 25 °C/77 °F

Unit: W

| F.V. (V/cell) \ Discharge Time | 30 Min | 1 Hr | 3 Hr  | 5 Hr  | 10 Hr | 20 Hr |
|--------------------------------|--------|------|-------|-------|-------|-------|
| 1.80V                          | 488    | 272  | 118.9 | 87.74 | 46.0  | 24.23 |
| 1.75V                          | 506    | 281  | 121.3 | 89.16 | 46.7  | 24.60 |
| 1.70V                          | 519    | 287  | 122.7 | 89.95 | 47.1  | 24.79 |
| 1.65V                          | 526    | 290  | 123.7 | 90.00 | 47.3  | 24.87 |
| 1.60V                          | 532    | 293  | 124.3 | 90.05 | 47.3  | 24.87 |

### Constant current discharge characteristics at 25 °C/77 °F

Unit: A

| F.V. (V/cell) \ Discharge Time | 30 Min | 1 Hr | 3 Hr  | 5 Hr | 10 Hr | 20 Hr |
|--------------------------------|--------|------|-------|------|-------|-------|
| 1.80V                          | 42.2   | 23.2 | 9.96  | 7.31 | 3.837 | 2.019 |
| 1.75V                          | 43.8   | 23.9 | 10.16 | 7.43 | 3.895 | 2.050 |
| 1.70V                          | 44.9   | 24.4 | 10.28 | 7.50 | 3.926 | 2.066 |
| 1.65V                          | 45.5   | 24.7 | 10.36 | 7.51 | 3.938 | 2.072 |
| 1.60V                          | 46.0   | 25.0 | 10.41 | 7.51 | 3.938 | 2.072 |

All data and artworks shall be changed without prior notice, BB reserves the right to explain and update the information contained hereinto.

