



VRLA Rechargeable Battery

EB24-12 (EB24-12FR)



FEATURES

- Maintenance free(no water topping-up required)
- No free acid(Non-spillable battery)
- Can be used in any orientation(excluding used inverted)
- The battery is designed for high power & high cyclic usage
- Low self-discharge rate, lower than 3% capacity loss per month

APPLICATION

- UPS
- E-bike
- Wheelchairs
- Lawn Mowers
- Golf-Carts
- Electrical Scooter



SPECIFICATIONS

Nominal Voltage	12 V
Nominal Capacity	24Ah @ 20 hour rate F.V.(1.75V/cell)
Approx. Weight	7350g(16.2lbs.)
Terminals	BE Threaded copper alloy
Internal Resistance	≤10mΩ (Fully Charged)
Max. Discharge Current	360 A (5 sec.)
Maximum Charge Current	7.2 A
Operating Temperature	Charge : 0°C~40°C(32°F~104°F) Discharge : -20°C~50°C(-4°F~122°F) Storage. : -20°C~40°C(-4°F~104°F)
Case Material	ABS(UL94-HB, UL94-V0 is optional)

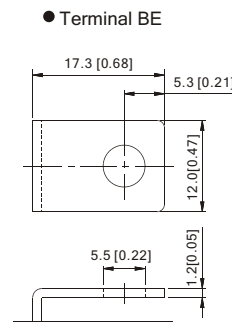
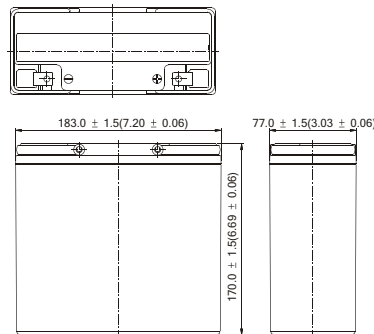
ISO 9001	
ISO14001	
UL	 MH19884
CE	 C4M20310-2474-E-16
<ul style="list-style-type: none"> ● IEC61056 ● JIS C 8702 ● GB/T 19639 	

DIMENSION(mm/inch)

OUTER DIMENSIONS

TERMINAL TYPE

- **Length**
183±1.5 (7.20±0.06)
- **Width**
77±1.5 (3.03±0.06)
- **Container Height**
170±1.5 (6.69±0.06)
- **Total Height**
170±1.5 (6.69±0.06)



Constant power discharge characteristics at 25 °C/77 °F Unit: W

F.V. (V/cell)	Discharge Time	10 Min	15 Min	30 Min	40 Min	1 Hr	2 Hr	3 Hr	5 Hr	10 Hr	20 Hr
1.80V		646.2	523.3	329.1	260.9	195.36	114.0	84.1	53.2	26.93	14.11
1.75V		700.1	548.1	342.1	270.5	201.00	117.0	85.8	53.9	27.36	14.40
1.70V		725.8	564.7	349.4	275.6	204.36	118.2	86.4	54.3	27.50	14.54
1.65V		743.2	577.9	354.6	279.6	207.12	119.4	87.0	54.7	27.65	14.69
1.60V		757.9	589.0	358.0	282.4	209.40	120.0	87.6	54.9	27.65	14.69
1.50V		772.7	601.1	361.3	285.3	211.56	120.6	88.1	54.8	27.65	14.69

Constant power discharge characteristics at 25 °C/77 °F Unit: A

F.V. (V/cell)	Discharge Time	10 Min	15 Min	30 Min	40 Min	1 Hr	2 Hr	3 Hr	5 Hr	10 Hr	20 Hr
1.80V		56.9	45.5	27.9	22.0	16.42	9.50	7.01	4.44	2.24	1.18
1.75V		61.6	47.7	29.0	22.8	16.88	9.75	7.15	4.49	2.28	1.20
1.70V		63.9	49.1	29.6	23.3	17.17	9.85	7.20	4.52	2.29	1.21
1.65V		65.4	50.3	30.0	23.6	17.40	9.95	7.25	4.56	2.30	1.22
1.60V		66.7	51.2	30.3	23.9	17.59	10.00	7.30	4.57	2.30	1.22
1.50V		68.0	52.3	30.6	24.1	17.78	10.05	7.34	4.57	2.30	1.22

All data shall be changed without prior notice, BB reserves the right to explain and update the information contained hereinto.
A/0 REV. May. 2009

Powered by **B.B. Battery Co., Ltd.**