

VRLA Rechargeable Battery

HR75-12 (HR75-12FR)



FEATURES

- Maintenance free(no water topping-up required).
- No free acid(Non-spillable battery).
- Low self-discharge rate, lower than 3% capacity loss per month.
- Can be used in any orientation(excluding used inverted).
- The battery is designed for high rate usage.
- Absorbent Glass Mat technology for efficient gas recombination.
- The power density at 5 min~15min discharging rate is 30% higher than BP series.

APPLICATION

- UPS
- Wheelchairs
- Golf-Carts



SPECIFICATIONS

Nominal Voltage	12 V
Nominal Capacity	73Ah @ 10 hour rate F.V.(1.75V/cell)
Approx. Weight	24.75Kg(54.57lbs.)
Terminals	B5 (Fitting M6 bolt & nut) I2 is optional
Internal Resistance	≤4mΩ (Fully Charged)
Max. Discharge Current	650 A (5 sec.)
Max. Charge Current	21.9 A
Operating Temperature Range	Charge : 0°C~40°C(32°F~104°F) Discharge : -20°C~50°C(-4°F~122°F) Storage. : -20°C~40°C(-4°F~104°F)
Container Material	ABS(UL94-HB, UL94-V0 is optional)

ISO 9001	ngs ISO 9001 REGISTERED	UKAS REGISTERED
ISO14001	WSC ISO14001	
UL	UL MH19884	
CE	CE C4M20310-2474-E-16	
<ul style="list-style-type: none"> • IEC 61056-1 • JIS C 8702-1 • GB/T 19639.1 		

DIMENSION(mm/inch)

OUTER DIMENSIONS

TERMINAL TYPE

Length

350±2.0 (13.78±0.08)

Width

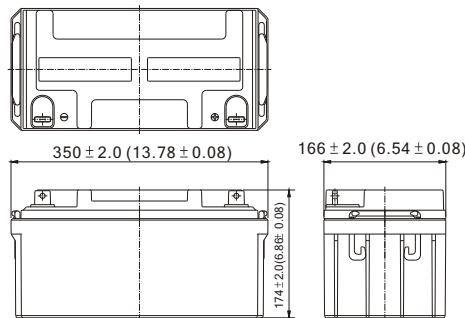
166±2.0 (6.54±0.08)

Container Height

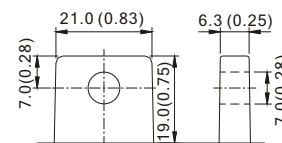
174±2.0 (6.85±0.08)

Total Height

174±2.0 (6.85±0.08)

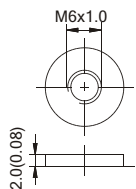


Terminal B5



[M6 BOLT & NUT]

Terminal I2



[M6 BOLT]

Terminal Hardware Initial Torque: B5/I2(5.5Nm±5%)

Constant power discharge characteristics at 25 °C/77 °F

Unit: W

F.V. (V/cell) \ Discharge Time	15 Min	20 Min	30 Min	40 Min	50 Min	60 Min	120 Min
1.80V	1520.7	1297.8	986.3	750.0	625.6	551.3	303.8
1.70V	1647.3	1373.0	1027.5	778.5	646.9	563.4	310.1
1.60V	1728.8	1425.1	1049.6	796.5	660.0	573.7	315.0
1.50V	1766.3	1447.5	1063.2	806.3	667.5	579.4	316.8
1.40V	1786.0	1460.4	1070.9	811.5	672.2	585.0	317.7
1.30V	1799.9	1470.0	1076.3	815.7	676.7	585.0	318.6

Constant current discharge characteristics at 25 °C/77 °F

Unit: A

F.V. (V/cell) \ Discharge Time	15 Min	20 Min	30 Min	40 Min	50 Min	60 Min	120 Min
1.80V	131.55	111.30	83.59	63.08	52.35	45.94	25.31
1.70V	142.50	117.75	87.08	65.48	54.14	46.95	25.84
1.60V	149.55	122.22	88.95	66.99	55.23	47.81	26.25
1.50V	152.79	124.14	90.10	67.81	55.86	48.29	26.40
1.40V	154.50	125.25	90.75	68.25	56.25	48.75	26.48
1.30V	155.70	126.07	91.21	68.60	56.63	48.75	26.55

All data shall be changed without prior notice, BB reserves the right to explain and update the information contained hereinto.