

VRLA Rechargeable Battery

MSU-1000 (2V, 1000Ah)



FEATURES

- Sealed structure, no electrolyte leakage or spill.
- High performance alloy to secure corrosion-proof feature.
- Unique electrolyte system achieves maximum service life.
- Special paste formula promotes the good charging acceptance.
- Electrolyte with gel technology.

APPLICATION

- Telecom
- UPS
- Central Office
- Energy Storage Systems



SPECIFICATIONS

Nominal Voltage	2 V
Nominal Capacity	1000Ah @ 10 hour rate F.V.(1.80V/cell)
Approx. Weight	60.5Kg(133.4lbs.)
Terminals	B6 (Fitting M8 bolt & nut) I3 is optional
Internal Resistance	≤ 0.5m Ω (Fully Charged)
Max. Discharge Current	4000 A (5 sec.)
Max. Charge Current	250 A
Operating Temperature Range	Charge 0°C~40°C(32°F~104°F) Discharge -20°C~50°C(-4°F~122°F) Storage. -20°C~40°C(-4°F~104°F)
Safety Valve	Opening pressure 10~35 kPa
Container Material	Standard: ABS(UL94 HB) MSU-1000 Optional: Flame Retardant ABS(UL94 V-0) MSU-1000FR



MH19884



TS-1352

- IEC60896-21/22
- JIS C 8704-2
- GB/T19638.2
- YD/T799

DIMENSION(mm/inch)

OUTER DIMENSIONS

TERMINAL TYPE

Length

410±2.0 (15.79±0.08)

Width

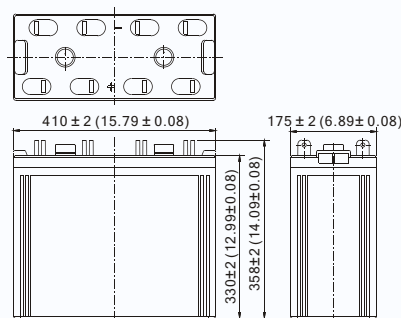
175±2.0 (6.89±0.08)

Container Height

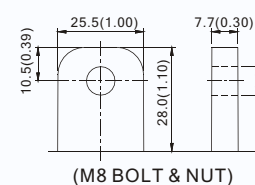
330±2.0 (12.99±0.08)

Total Height

358±2.0 (14.09±0.08)

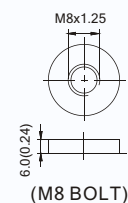


Terminal B6



(M8 BOLT & NUT)

Terminal I3



(M8 BOLT)

Terminal Hardware Initial Torque: 10.0 Nm ± 5%

Constant power discharge characteristics at 20°C/68°F Unit: W

F.V. (V/cell)	Discharge Time	30 Min	1 Hr	2 Hr	3 Hr	4 Hr	5 Hr	6 Hr	8 Hr	10 Hr	12 Hr	20 Hr
1.85V		1311.5	900.0	579.0	451.0	350.5	302.0	269.0	222.5	186.0	161.20	100.44
1.80V		1455.0	990.0	625.0	477.7	386.0	329.0	286.5	238.0	196.9	168.98	105.33
1.75V		1594.0	1050.0	662.5	503.0	404.4	344.0	299.0	245.5	205.6	174.77	108.46
1.70V		1750.0	1120.0	685.0	520.2	412.5	352.5	306.5	250.5	212.5	178.85	110.25
1.65V		1880.0	1155.0	695.0	530.8	421.0	357.5	312.5	255.0	215.5	181.38	111.18
1.60V		1917.5	1165.0	705.0	535.8	426.0	362.5	314.0	258.0	217.5	182.22	111.50

Constant current discharge characteristics at 20°C/68°F Unit: A

F.V. (V/cell)	Discharge Time	30 Min	1 Hr	2 Hr	3 Hr	4 Hr	5 Hr	6 Hr	8 Hr	10 Hr	12 Hr	20 Hr
1.85V		700.0	480.0	305.0	235.8	185.0	156.6	135.0	110.0	93.5	81.03	50.49
1.80V		780.0	530.0	330.0	250.0	204.0	170.0	145.0	121.0	100.0	85.83	53.50
1.75V		861.5	565.0	351.5	264.7	214.0	180.0	155.0	126.5	105.5	89.68	55.65
1.70V		955.0	606.0	366.5	275.9	219.5	186.0	160.0	131.0	109.5	92.16	57.25
1.65V		1022.5	630.5	376.5	285.1	225.0	191.0	166.0	135.0	111.5	93.35	58.00
1.60V		1075.0	646.5	387.5	291.2	229.0	194.0	167.5	137.5	112.5	94.22	58.15

All data and artworks shall be changed without prior notice, BB reserves the right to explain and update the information contained herein.