

VRLA Rechargeable Battery

MSU-400 (2V, 400Ah)



FEATURES

- Sealed structure, no electrolyte leakage or spill.
- High performance alloy to secure corrosion-proof feature.
- Unique electrolyte system achieves maximum service life.
- Special paste formula promotes the good charging acceptance.
- Electrolyte with gel technology.

APPLICATIONS

- Telecom
- UPS
- Central Office
- Energy Storage Systems



SPECIFICATIONS

Nominal Voltage	2 V
Nominal Capacity	400Ah @ 10 hour rate F.V.(1.80V/cell)
Approx. Weight	24.5Kg(54.0lbs.)
Terminals	B6 (Fitting M8 bolt & nut) I3 is optional
Internal Resistance	≤ 0.8m Ω (Fully Charged)
Max. Discharge Current	1760 A (5 sec.)
Max. Charge Current	100 A
Operating Temperature Range	Charge 0°C~40°C(32°F~104°F) Discharge -20°C~50°C(-4°F~122°F) Storage: -20°C~40°C(-4°F~104°F)
Safety Valve	Opening pressure 10~35 kPa
Container Material	Standard: ABS(UL94 HB) MSU-400 Optional: Flame Retardant ABS(UL94 V-0) MSU-400FR



- IEC60896-21/22
- JIS C 8704-2
- GB/T19638.2
- YD/T799

DIMENSION(mm/inch)

OUTER DIMENSIONS

TERMINAL TYPE

Length

174±2.0 (6.85±0.08)

Width

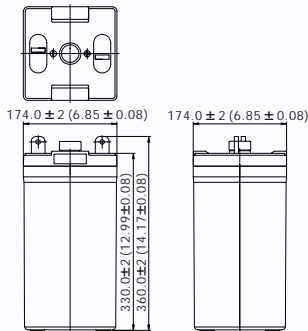
174±2.0 (6.85±0.08)

Container Height

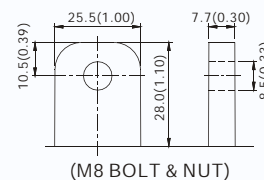
330±2.0 (12.99±0.08)

Total Height

360±2.0 (14.17±0.08)

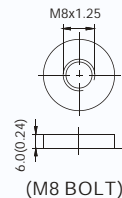


Terminal B6



Terminal Hardware Initial Torque: 10.0 Nm ± 5%

Terminal I3



Constant power discharge characteristics at 25 °C/77 °F Unit: W

F.V. (V/cell) \ Discharge Time	1 Hr	2 Hr	3 Hr	4 Hr	5 Hr	6 Hr	8 Hr	10 Hr	12 Hr	20 Hr
1.85V	360.0	231.6	180.4	140.2	120.8	107.6	89.0	74.4	64.48	40.18
1.80V	396.0	250.0	191.1	154.4	131.6	114.6	95.2	78.7	67.59	42.13
1.75V	420.0	265.0	201.2	161.8	137.6	119.6	98.2	82.2	69.91	43.38
1.70V	448.0	274.0	208.1	165.0	141.0	122.6	100.2	85.0	71.54	44.10
1.65V	462.0	278.0	212.3	168.4	143.0	125.0	102.0	86.2	72.55	44.47
1.60V	466.0	282.0	214.3	170.4	145.0	125.6	103.0	87.0	72.89	44.60

Constant current discharge characteristics at 25 °C/77 °F Unit: A

F.V. (V/cell) \ Discharge Time	1 Hr	2 Hr	3 Hr	4 Hr	5 Hr	6 Hr	8 Hr	10 Hr	12 Hr	20 Hr
1.85V	192.0	122.0	94.3	74.0	62.6	54.0	44.0	37.4	32.41	20.20
1.80V	212.0	132.0	100.0	81.6	68.0	58.0	48.4	40.0	34.33	21.40
1.75V	226.0	140.6	105.9	85.6	72.0	62.0	50.6	42.2	35.87	22.26
1.70V	242.4	146.6	110.4	87.8	74.4	64.0	52.4	43.8	36.87	22.90
1.65V	252.2	150.6	114.0	90.0	76.4	66.4	54.0	44.6	37.34	23.20
1.60V	258.6	155.0	116.5	91.6	77.6	67.0	55.0	45.0	37.69	23.26

All data and artworks shall be changed without prior notice, BB reserves the right to explain and update the information contained hereinto.

A/4 REV. May 2021

Powered by **B.B. Tech(Changsha)Co., Ltd.**